



Partnerships

Partnership Engagement Framework

HYDRANT PROGRAMME

Supporting child protection
and abuse investigation

Partnership Engagement Framework



Executive Summary

This framework is a partnership engagement model which outlines how the Hydrant Programme Partnership Hub plans to interact, collaborate, and build more active relationships with its partners.

It endeavours to ensure provision of strength-based and relationship-based approaches to partnership working and engagement. Using courageous and adaptive partnership working and collaboration it will create conditions in which partners and professionals can navigate complexity and uncertainty with relevant police forces, with particular focus on complex and organised child sexual abuse and exploitation.



Desired Outcomes

The Partnership Hub has identified the following outcomes which will direct its work throughout 2023 and 2024. These outcomes align with the Hydrant Programme Strategic Plan 2023/2024 and the objectives of the national Tackling Child Sexual Exploitation Taskforce.

- + Improve the police service response to the safeguarding of children and investigation of child sexual abuse with a focus on complex and organised sexual abuse.
- + Increase victim, survivor and public confidence in the policing approach to tackling child sexual exploitation and abuse.
- + Improve liaison with partnership organisations to add value to our approach where we can.
- + Increase support to those organisations that deal with complex child sexual abuse safeguarding cases to ensure these are effectively coordinated and there is a positive policing response.



Activities

The Partnership Hub will deliver the following activities to its partnership organisations:

- + Develop best practice advice and be a hub for specialist knowledge and expertise on tackling complex and organised child sexual abuse.
- + Develop our collaborative approach with other law enforcement programmes to enhance the service we provide to support forces and partner organisations.
- + Provide a national analysis capability for child sexual abuse and lead a collaborative effort of other policing programmes and partners to develop a wider understanding of scale, prevalence and risk.



Deliverables

The Partnership Hub will, in accordance with the Hydrant Strategic Plan 2023/2024, deliver the following:

- + A national hub to support third sector organisations who deal with complex issues involving child sexual abuse and safeguarding, and have reason to engage with policing.
- + A channel for those organisations to refer complex child abuse cases that require coordination because of their national footprint.
- + Participation and engagement forums for third sector organisations to share best practice, understand challenges, and provide an opportunity to problem-solve.
- + Coordinate the police service response to child sexual abuse and exploitation in collaboration with relevant government departments.



Partners

The Partnership Hub recognises that multi-agency working is the cornerstone of effective child safeguarding¹, and further acknowledges the role of the third sector in this multi-agency context. Organisations across the vulnerability sector can provide expertise, knowledge, service and intervention in cases of child sexual abuse and child sexual exploitation.

Non-governmental and non-profit making organisations and associations, and can include, but is not limited to, charities, voluntary and community groups, faith groups, sporting bodies, and so on. At both a strategic and tactical level the Partnership Hub will ensure that the relationships between the third sector and policing is robust and appropriate.

No partnership working, nor child-centred approach can be effective without actively engaging with, and learning from those with lived experience. The Partnership Hub therefore collaborates with several partners who support, represent and advocate for victims and survivors of child sexual abuse and exploitation. The Partnership Hub recognises the importance of restoring victim and survivor trust and confidence by dealing with complex safeguarding cases in a prompt equitable and transparent manner for those most closely affected.

Existing Partners

The Partnership Hub currently receives referrals from 60 partner organisations spanning across sectors including but not limited to governmental, sporting, religious and charity sectors, children's clubs and associations, victim/survivor advocacy and third party/voluntary sector services and support.

Potential Partners

The Partnership Hub is always looking for new opportunities to engage to engage and build constructive relationships with third sector groups.



¹ Dixon et al, 2022, 'Supporting the multi-in multi-agency working', British Journal of General Practice

Roles And Responsibilities

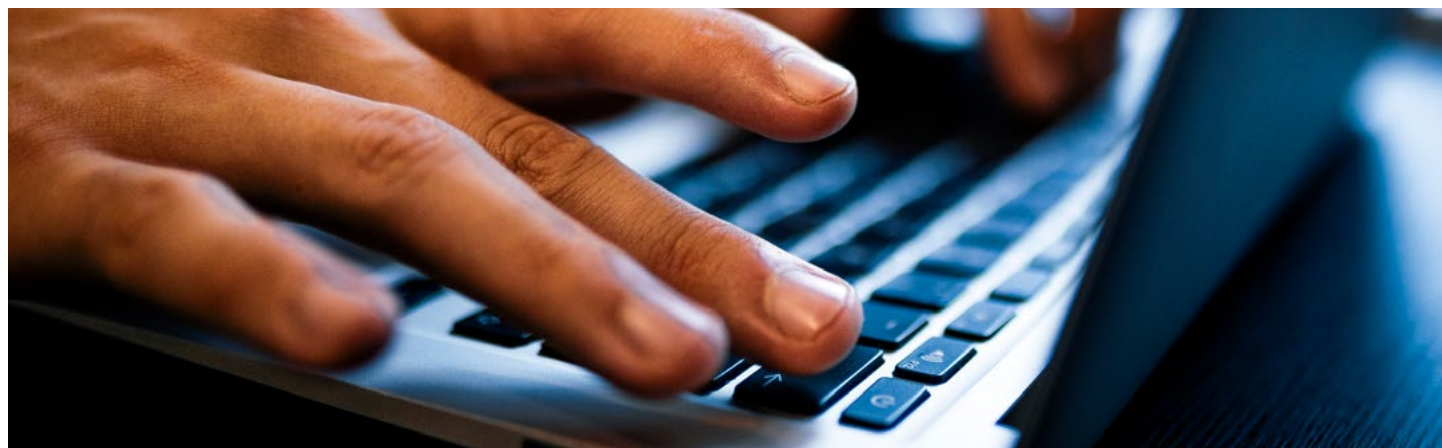
The Partnership Hub

- + Working at both tactical and strategic levels, the Partnership Hub will ensure that the relationship between partners and policing is robust and appropriate, ensuring that confidence in the national policing approach is enhanced.
- + Acts as the conduit between referring organisations and national policing. It receives complex child safeguarding and abuse referrals, and disseminate them to relevant police forces for action to be taken. The process of information sharing and reporting concerns with local policing continues to be challenging for our partners, particularly where there are multiple offence locations, victims, and perpetrators. The Partnership Hub shall assist in making this process more accessible and forge improved engagement between partners and local police force safeguarding teams.
- + Ensure proper involvement, engagement, and oversight of partners to create conditions in which partner professionals can navigate complexity and uncertainty within child safeguarding flora.
- + Function as the tactical link to the National Child Safeguarding Practice Review Panel to enable the efficient sharing of operational learning and effective practice.

Partners:

Partners to the Hydrant Programme shall:

- + Have a clear understanding of its responsibilities in relation to referring complex child abuse and exploitation cases to the Partnership Hub.
- + Attend, participate, and engage, as is reasonably practicable, in Partnership Hub engagement forums to share best practice, understand challenges and problem solve.
- + Share information and data about safeguarding issues and concerns affecting children and professionals in their organisation to contribute to sharing of best practice, challenges, and emerging themes.



Establishing Partnership Relations

The Partnership Hub will maintain and establish new partnership relationships by:

- + Building joint engagement plans to co-create strategic and operational opportunities for improvement to child protection investigations and abuse.
- + Regular participation and engagement forums.
- + Provision of value-added resources to national, strategic, and local child safeguarding practice to enhance the police service response to the safeguarding of children and investigation of child sexual abuse with a focus on complex and organised sexual abuse.
- + Wherever possible, align partnership activities and purpose with partners' objectives.
- + Provide national analysis for complex and organised child sexual abuse and other vulnerabilities to develop a wider understanding of scale and threat.

Communications

Methods of partnership communications shall include:

- + The Partnership Hub website as a one-stop shop which shall recognise and highlight key partners
- + Social Media
- + Video Interviews
- + Podcasts
- + Engagement and participation forums
- + Lunch and learn sessions
- + Newsletters
- + 7 Minute Briefings
- + Lessons Learnt Bulletins
- + Focus groups, surveys and consultations
- + Partnership Hub Annual Report

Assessing Effectiveness

The Partnership Hub shall develop a continuous improvement feedback loop, with an evaluation process to understand what is, and what is not working well, and assess how to further improve partnership engagement strategies.

Reporting And Governance

The Partnership Hub will provide an annual report to evidence what it has done, the impact it has had, the learning identified, and steps taken to ensure partnership working continues to improve.

The Hydrant Programme's Partnership Programme, is part of the National Police Chief's Council (NPCC) which brings UK police leaders together to set direction in policing and drive progress for the public. The programme supports the work of the NPCC Child Protection and Abuse Investigation (CPAI) portfolio.

Hydrant's Director is the strategic lead for the programme, the budget holder and is accountable for delivering the programme.

Enquiries

Should you require any further detail then please contact hydrantenquiries@southyorks.pnn.police.uk

